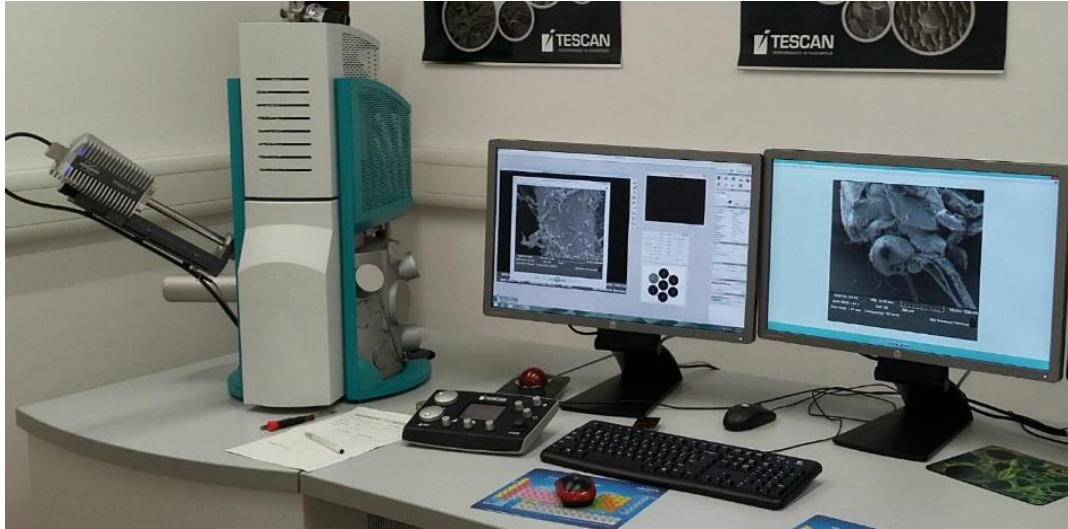


# Electron Microscopy Research Services

## Scanning EM (SEM)



## Transmission EM (TEM)



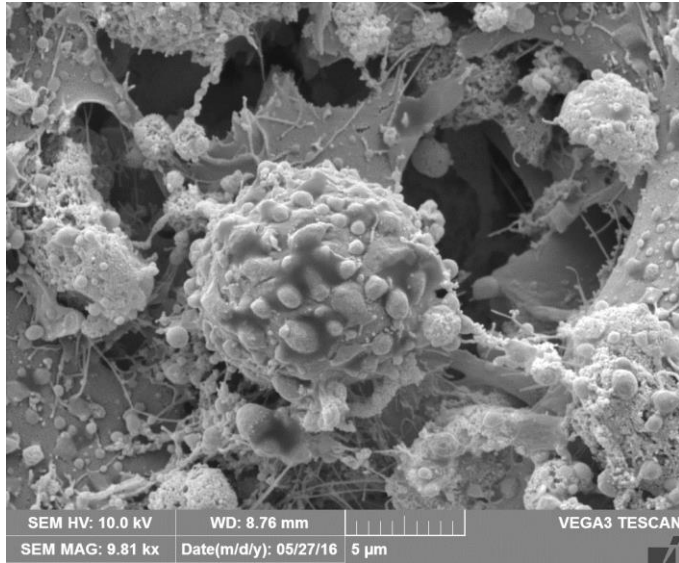
## Serial Block Face Scanning EM (SBFSEM)



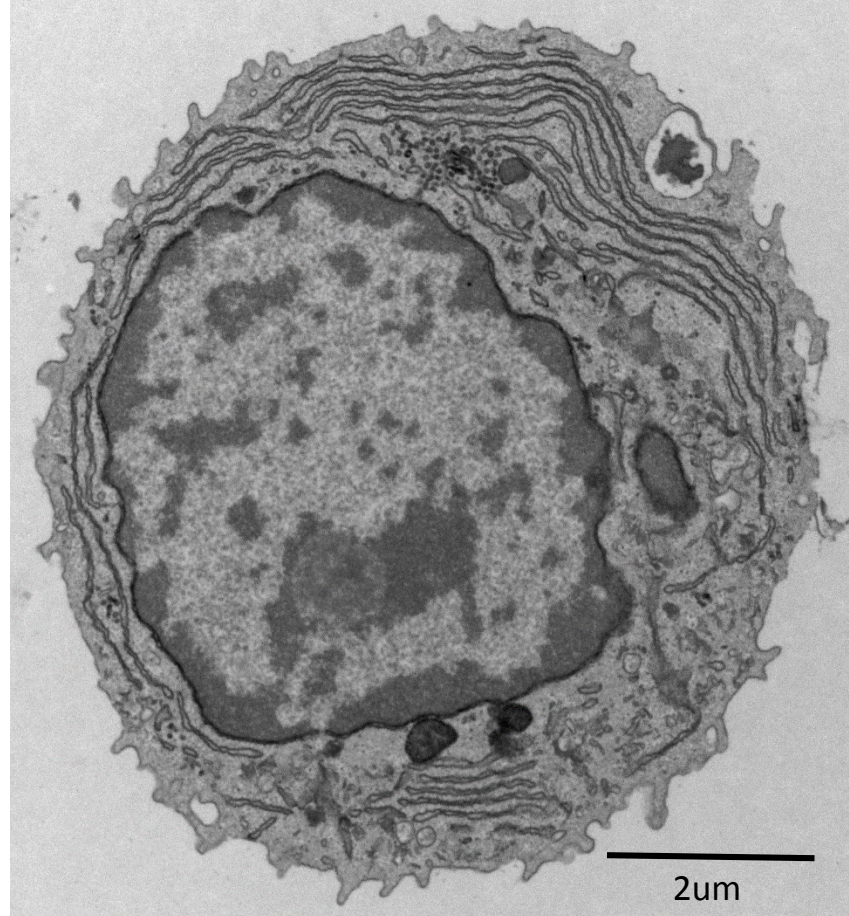
**What's the  
difference?**

# Electron Microscopy Research Services

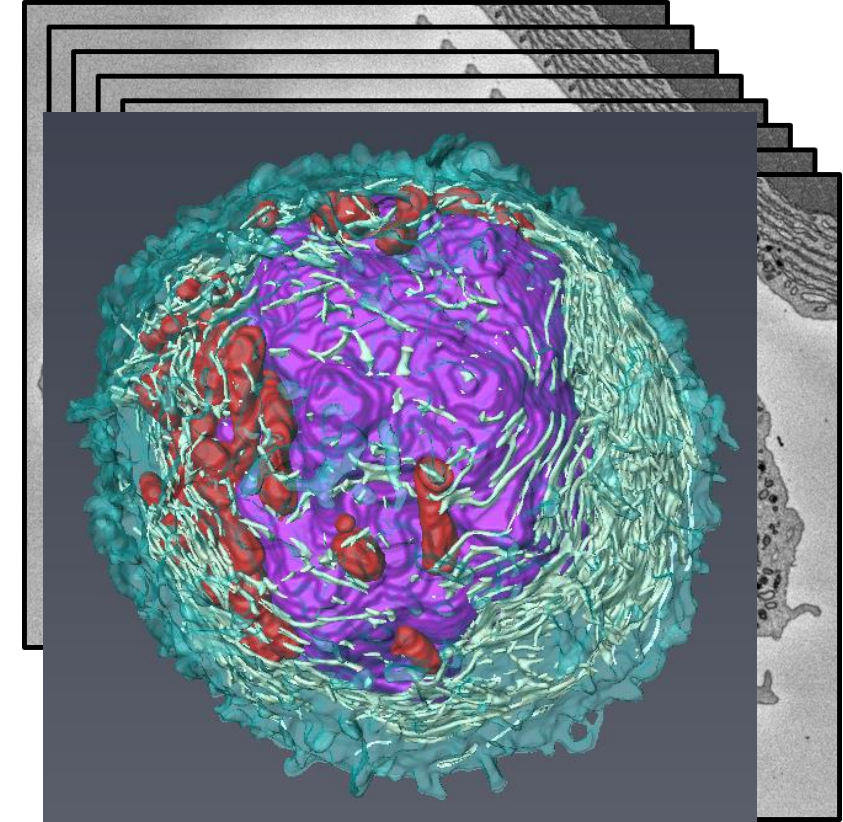
## Scanning EM



## Transmission EM

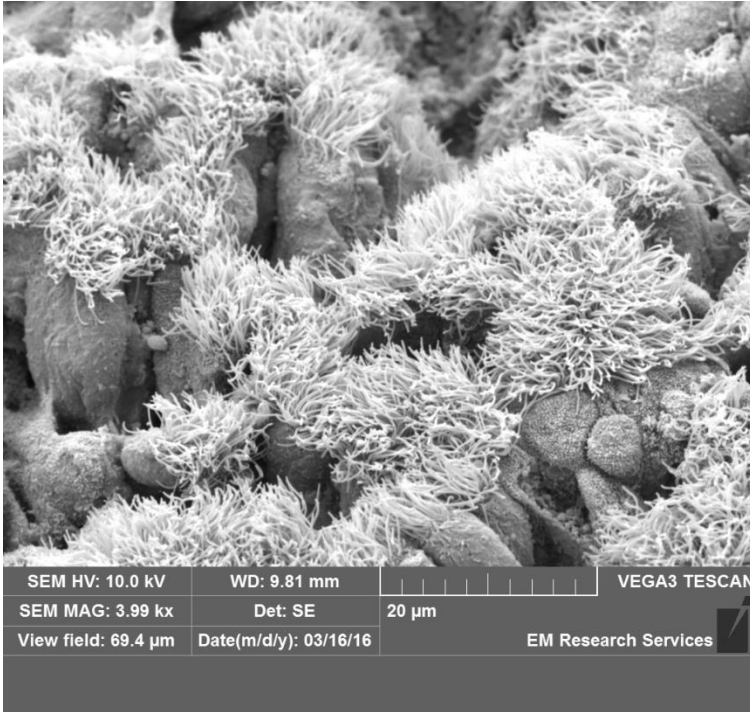


## Serial Block Face SEM

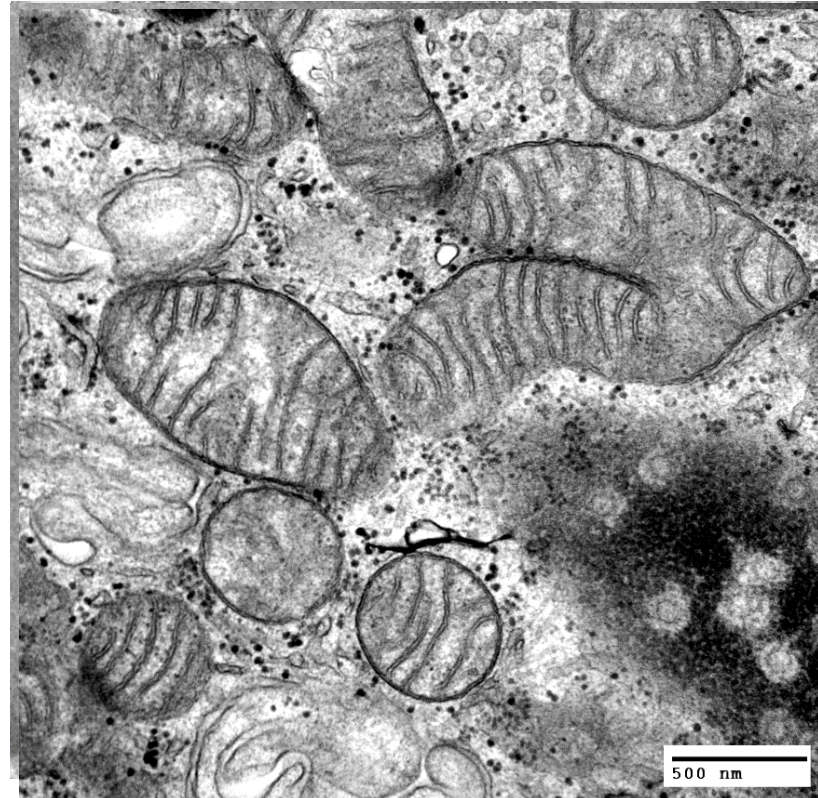


## What do you want to see?

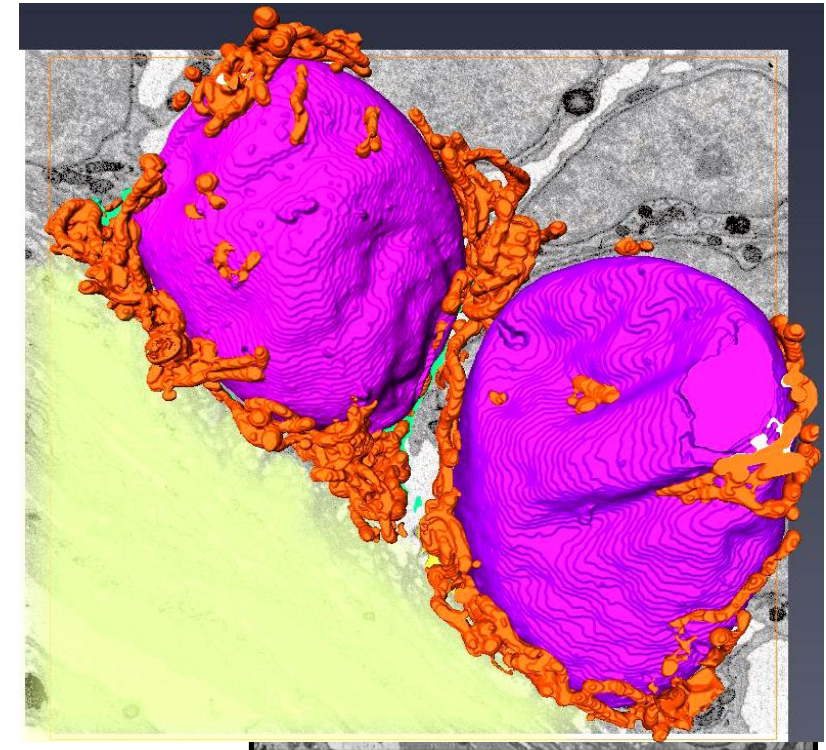
### Scanning EM



### Transmission EM

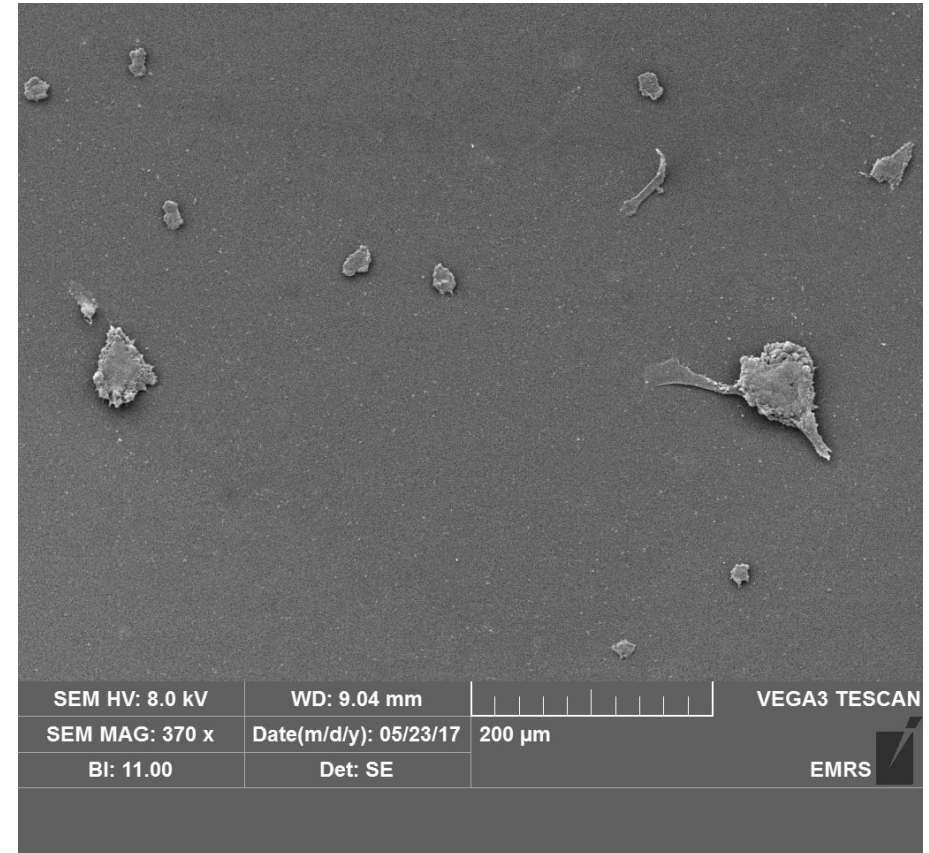
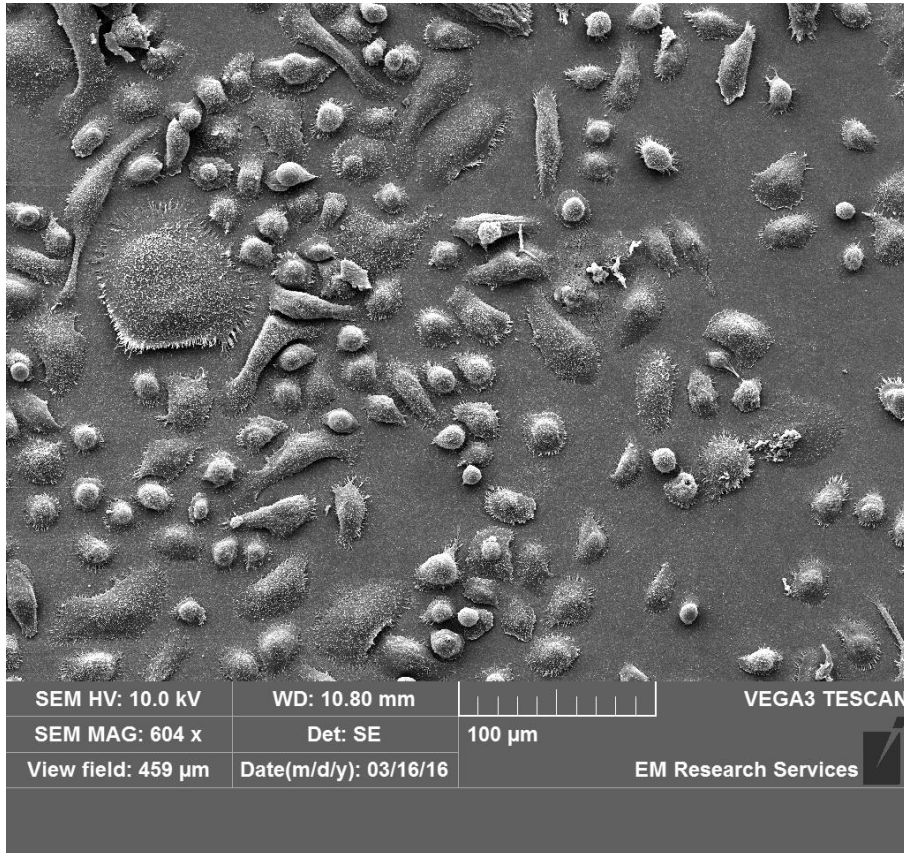


### Serial Block Face SEM



## Sample preparation

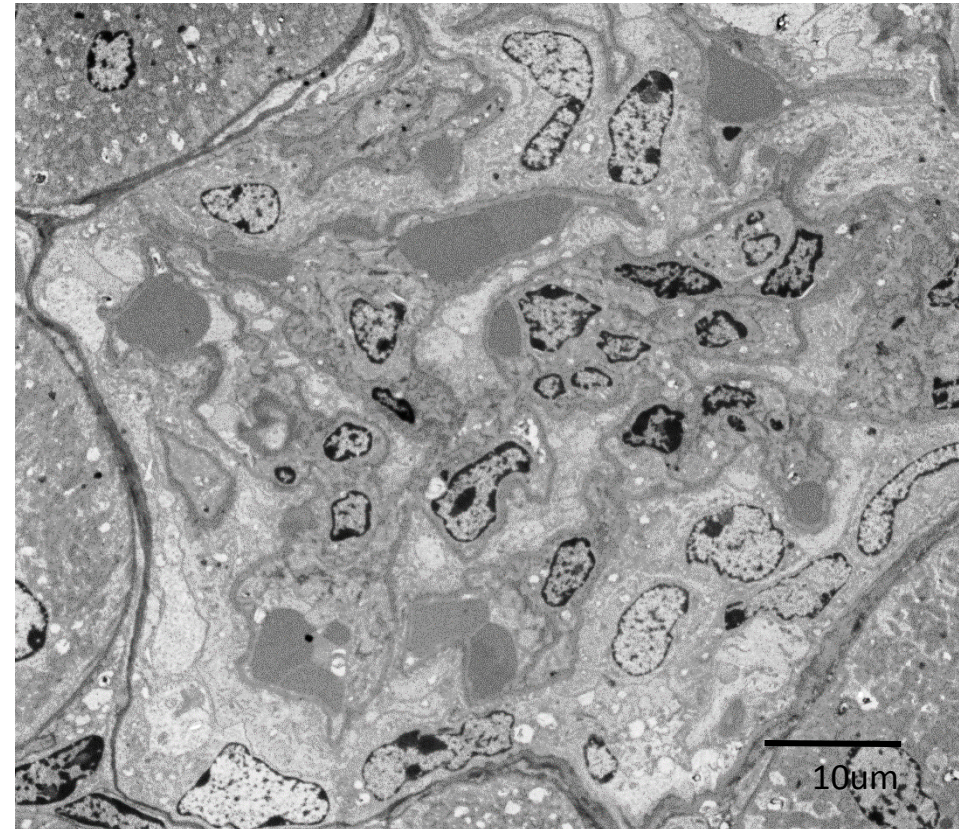
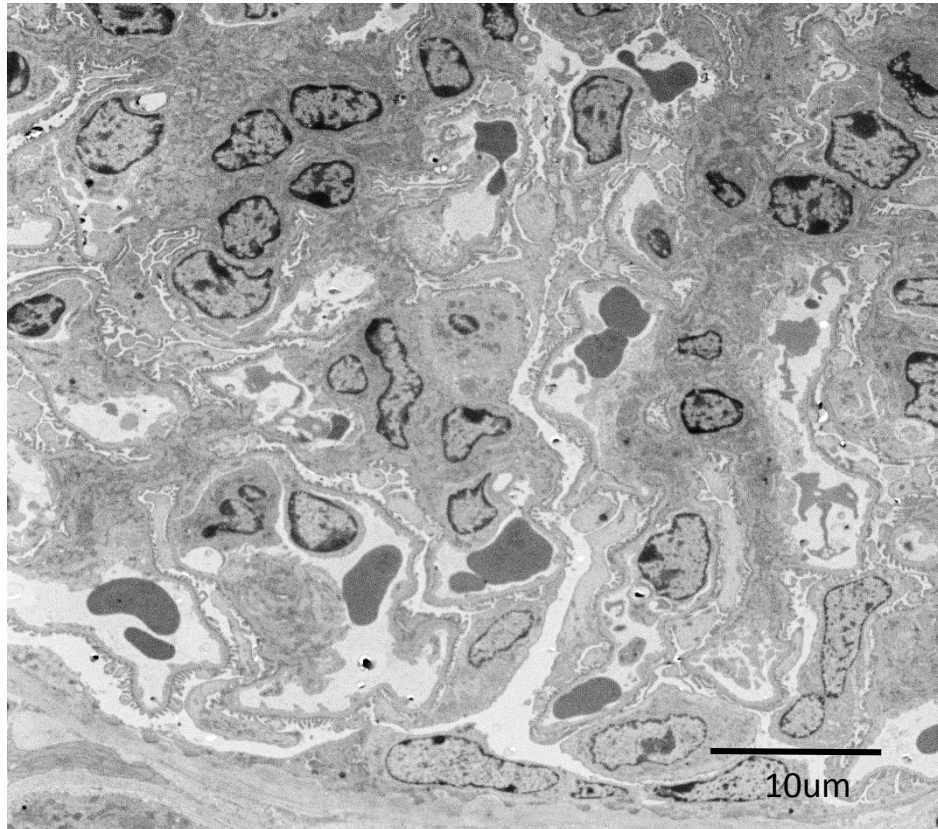
### Scanning EM



# Electron Microscopy Research Services

## Sample preparation

### Transmission EM



# Electron Microscopy Research Services

**Thinking of doing EM?  
Come and talk to us**

Ground floor Cookson Building  
[em.researchservices@ncl.ac.uk](mailto:em.researchservices@ncl.ac.uk)  
x86966

[kathryn.white@ncl.ac.uk](mailto:kathryn.white@ncl.ac.uk)  
[tracey.davey@ncl.ac.uk](mailto:tracey.davey@ncl.ac.uk)  
[ross.laws@ncl.ac.uk](mailto:ross.laws@ncl.ac.uk)